

# 3-in-1 REAR SPRING BLOCK KIT INSTALLATION

Dodge HD2500/3500 (8-Lug) 2WD/4WD

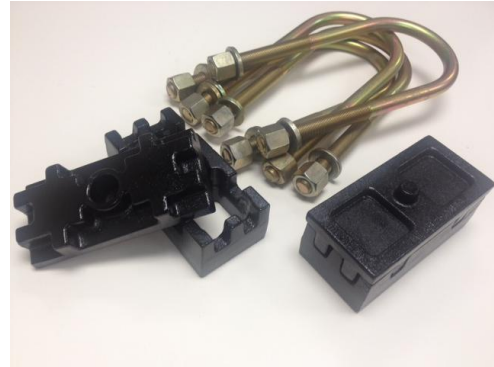
(For use ONLY on SRW, Non-dually & Non-camper vehicles)

PATENT PENDING

**IMPORTANT!** Read ALL WARNINGS and information contained in these instructions PRIOR to installing this product. Vehicle Owner MUST be provided the IMPORTANT VEHICLE OWNER'S INFORMATION section of these instructions after product has been installed.

## EACH KIT INCLUDES:

- (1) Installation Instructions & Warnings
- (2) Interlocking 3-in-1 Cast Iron Blocks
- (4) OEM Grade U-Bolts
- (8) OEM Grade Nuts & Washers



**ALWAYS WEAR PROPER EYE PROTECTION & USE TOOLS SPECIFIC TO THE JOB!**

**Step 1: Measure ORIGINAL STOCK ride height.** On a flat, solid surface, take a measurement from the wheel/rim to the lip of the fender on each side of the vehicle, **front & rear**. Write down measurements to help in determining ride height for new kit being installed. **(Figure A)**



Figure A

LEFT FRONT \_\_\_\_\_ RIGHT FRONT \_\_\_\_\_ LEFT REAR \_\_\_\_\_ RIGHT REAR \_\_\_\_\_

**Step 2: Position vehicle on a flat, stable surface or on a professional automotive lift.** Be sure engine is turned OFF and vehicle is in PARK. Secure using wheel chocks, and apply emergency brake.

**Step 3: Raise the rear of the vehicle by the frame, then support axle with a secondary jack.** **(Figure B)**



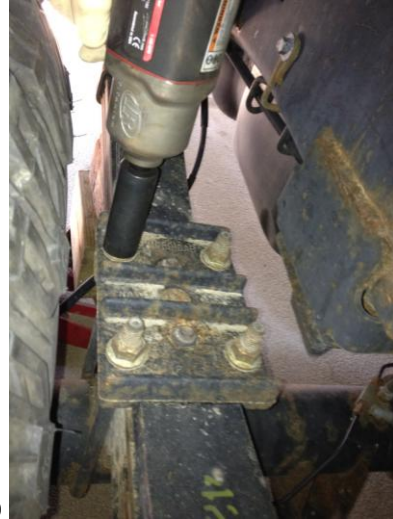
Figure B

**Step 4:** Disconnect lower shock mount hardware, as shown. **(Figure C)**



**Figure C**

**Step 5:** Remove the four U-bolt nuts and washers on first side of the vehicle, and remove axle bracket. **(Figure D)**



**Figure D**

**Step 6:** Lower axle to allow enough space for the new block kit being installed. Remove OE U-bolts.

**Step 7:** Determine whether you want a 1.0", 1.5" or 2.0" rear lift, and orient the components according to the images shown below to achieve your desired right height. If installing in the 2.0" configuration, **be sure that the indicia stamped FRONT on BOTH interlocking blocks is positioned toward the FRONT of the vehicle.** **(Figure E, below)**



**1.0" REAR LIFT OPTION**



**1.5" REAR LIFT OPTION**



**2.0" REAR LIFT OPTION**



**Figure E**

**IMPORTANT! THIS IS A PATENT PENDING, INTERLOCKING SYSTEM AND SHOULD NEVER BE STACKED OR USED WITH ANY OTHER LEAF SPRING BLOCKS AS IT MAY CAUSE AN UNSAFE CONDITION FOR BOTH THE INSTALLER & THE VEHICLE DRIVER.**

**Step 8:** Repeat steps 4 to 7 on the other side of the vehicle.

**Step 9:** Raise the axle slowly, making sure that the leaf spring centering pins locate properly on the top of the new block being installed, and that the new block centering pin locates properly into the hole on the axle's block pad.

**Step 10:** Install new U-Bolts and hardware provided to the original axle brackets, and torque to the vehicle manufacturer's specifications.  
**(Figure F)**



**Figure F**

**Step 11:** Check all fasteners for proper torque. Check to ensure there is adequate clearance between all rotating, mobile, fixed and heated members. Check steering for interference and proper working order. Test brake system.

**Step 12:** Perform a complete wheel alignment, utilizing a Certified Alignment Technician with experience working on lifted vehicles.

**Step 13:** ADJUST HEADLIGHT AIM to accommodate new ride height position.

**Step 14:** Check and re-torque U-bolt fasteners after 500 miles, and inspect regularly during routine maintenance.

## IMPORTANT VEHICLE OWNER'S INFORMATION

### 3-in-1 REAR SPRING BLOCK KIT

#### **WARNING**

**This product should only be installed by an ASE certified professional mechanic with proper tools and safety equipment.**

Installation of this product modifies vehicle ride height. The driver of this vehicle should avoid unnecessary or abrupt maneuvers, sharp turns and other driving conditions that could lead to rollover or other serious accident. This product will affect vehicle center of gravity resulting in less than the original OE stability characteristics.

The manufacturer of this product releases itself from any liability or consequence, inclusive but not limited to personal injury, failure of components or damage to vehicle or person as a result of installing this product.

**Check and re-torque U-bolt fasteners after 500 miles, and inspect regularly during routine maintenance.**

Warranties may be declined for any parts installed by any person other than an ASE certified professional. No warranty will be made for any other OEM or aftermarket components that may be affected by the installation of this product either in use or during installation. This kit is intended for use on stock suspensions WITHOUT any previous modifications whatsoever. Installation of this kit in conjunction with other aftermarket products will be done at vehicle owner's own risk, and voids any and all warranties.

Installation of this part MAY limit or void some vehicle manufacturer's warranties!

**ALWAYS DRIVE SAFELY, REDUCE SPEED, AND WEAR YOUR SEAT BELT.**

#### **LIMITED LIFETIME WARRANTY**

This product is warranted to be free of defects in materials and workmanship to the original purchaser on the vehicle in which it is originally installed. This warranty does not cover loss of time, labor, or any other components as a result of damage. This warranty may be void if this product is installed by any person other than an ASE certified professional.